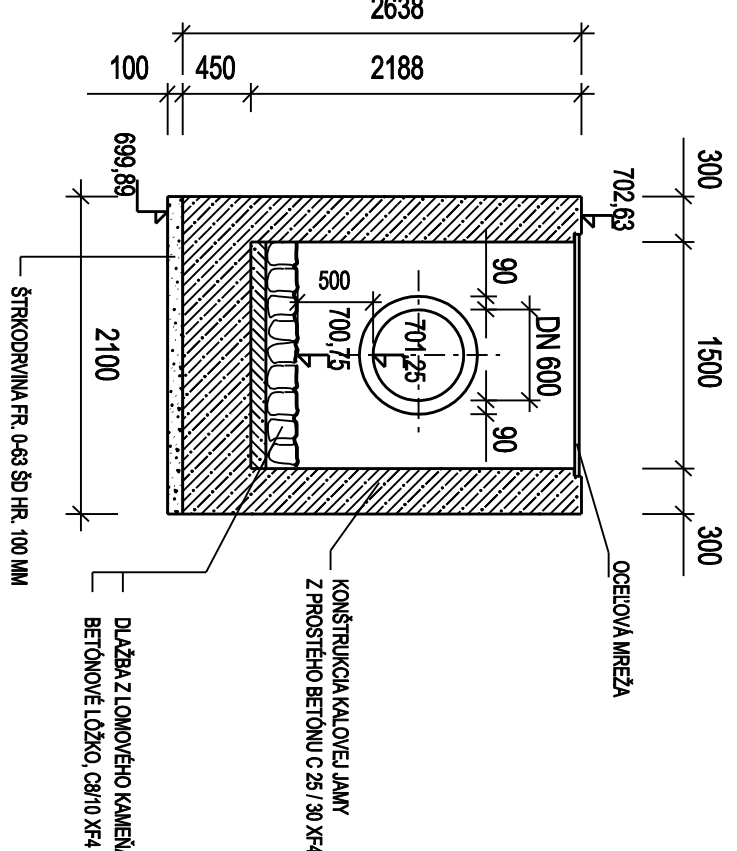


REZ B - B:

450 800 600 443 Silka komunikácie - premenlivá (kopíruje súčasny stav) 500 14/4

Dĺžka prepustu L 7700 mm



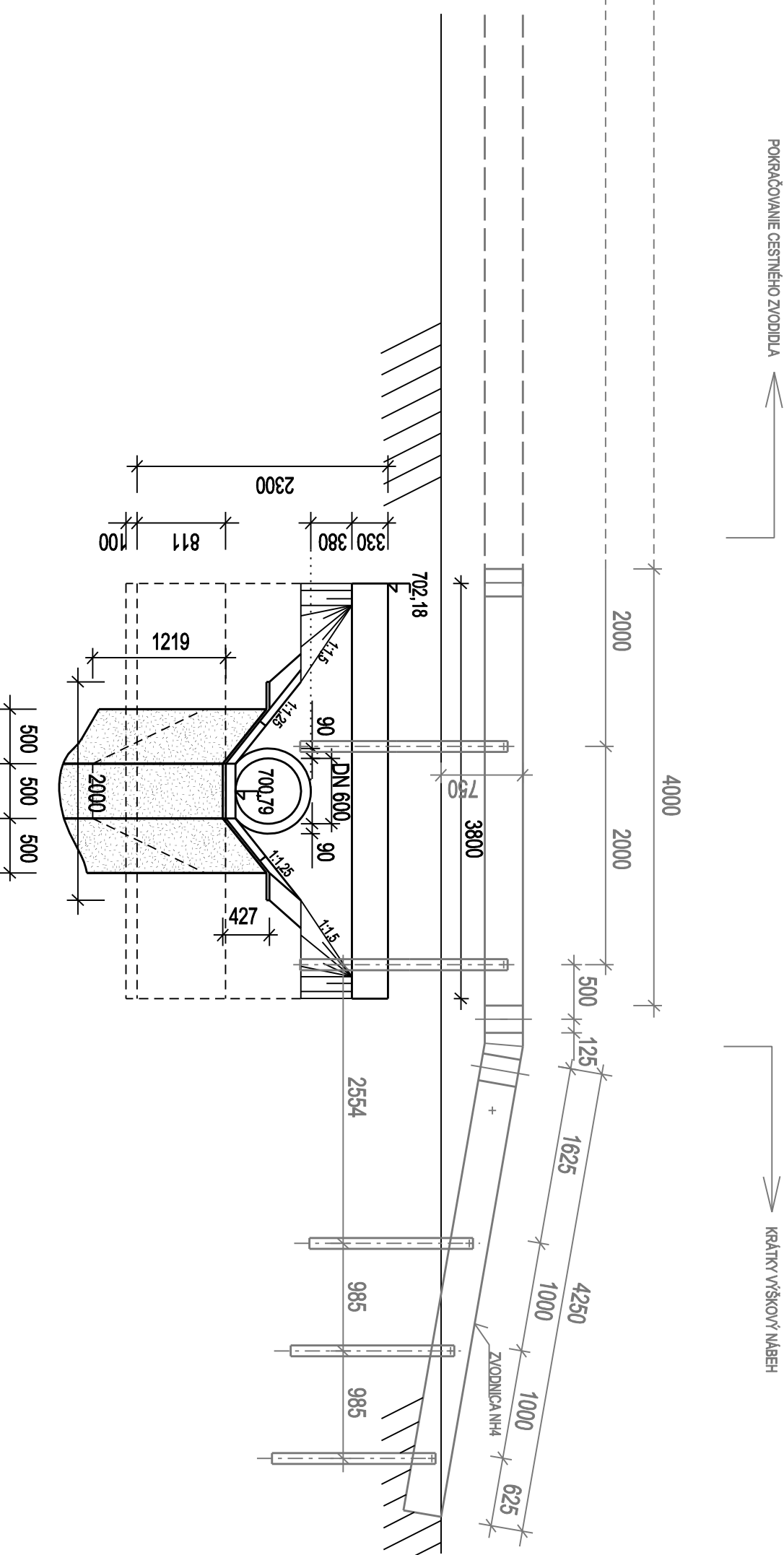
RÁN

Technical drawing of a rectangular frame. The drawing includes two views: a top view and a side view. The top view shows a rectangle with overall dimensions of 1570 (width) and 870 (height). The inner opening has dimensions of 1500 (width) and 800 (height). The frame consists of four panels, numbered 1 through 4. Panel 1 is the top-left panel, Panel 2 is the top-right panel, Panel 3 is the bottom-left panel, and Panel 4 is the bottom-right panel. The side view shows the frame's profile with a total width of 1560 and a height of 870. The frame is composed of two main sections, each 770 wide. The drawing also shows the frame's connection to a wall, with a wall thickness of 35 and a frame depth of 35. The frame is shown in a perspective view, with the top view and side view providing the necessary dimensions for construction.

QIN	POPS	PREDET	PODET	0.5X UM	MONITOR	ECO	
			(MG)	SPRU	LEW		
Rm - coe 235							
1	Rm	1.50/24.4	2	0.20	1.70	20.90	3.57
2	Rm	1.35/24.4	2	1.370	1.40	2.080	0.563
SPRU							
WETA - coe 235				4.890 M	10.200 K		
1	PE200m	#9-7/5	3	0.565	2.535	1.870	2.991
4	PE200m	#9-7/5	32	0.525	26.770	1.90	31.520
5	PE200m	#9-7/5	4	0.510	0.600	1.90	0.708
SPRU							
CEL200-23.75 M				29.855 M	54.749 K	35.223 K	

POKRAČOVANIE CESTNÉHO ZVODIDLA

KRÁTKÝ VÝŠKOVÝ NÁBEH



Technical drawing of a roof construction detail for a BURBIM 1:50 roof. The drawing shows a cross-section of the roof assembly with various layers and dimensions. Key dimensions include a total height of 702.87 mm, a base width of 1800 mm, and a sloped section with a 1:50 pitch. The assembly consists of a concrete slab (C25/30), a 100 mm thick insulation layer (EPS 0.035), a 100 mm thick waterproofing layer (ASTROFLEX), a 100 mm thick drainage layer (ASTROFLEX), a 100 mm thick insulation layer (EPS 0.035), a 100 mm thick waterproofing layer (ASTROFLEX), and a 100 mm thick insulation layer (EPS 0.035). The drawing also shows a 100 mm thick concrete slab (C25/30) and a 100 mm thick insulation layer (EPS 0.035). The drawing is labeled with 'BURBIM 1:50' and '702.87'.

SRČADNICE	Y	X
301	377738,55	1241585,23
302	377736,46	1241585,11
303	377738,35	1241586,95
304	377739,74	1241578,09
305	377735,95	1241577,86
306	377733,90	1241578,76

- predmetom tohto výkresu je zariadenie JSNH4/H⁺ pre úroveň zadržania H⁺

pre detaily nezaobkomentované v tomto výkrese plati :

TP 1/2005 Zvodila na pozemných komunikáciách (SSC)	TPV 1/67/SK (Technické podmienky ústrojca)
- Oslovie zvodiliá N14 - Priesťahové usporiadanie 1/2007	
- Oslovie zvodiliá N14 - Konštrukčné dily č. 6/2007	
- Oslovie zvodilió N14 - Montážny návod č. 1/2007	

Súradnicový systém : S-JTSK
Výškový systém : Bail po vyrovnaní; K.Ú. Lom nad Rimavicou, Drábsko

SO - 09 - ČASŤ D

[illegible]